



The Sun . . .

The Wind . . .

The View . . .



The Solution Screen

Retractable Fabric Tension System



Since 1979

Enhance Your Lifestyle



We offer a **Lifetime Warranty** on our motors and electronics



The Solution Screen has proven to be the most advanced and reliable retractable solar screen available.



Eliminate glare and allow filtered light to pass through.

The Solution Screen

Retractable Fabric Tension System

Solution Screens are the ideal retractable solar screen for maximum sun protection on your windows, doors and patios. Solution Screens were designed to be a very reliable product without the constant concern for windy conditions.

- Exceptional outward visibility
- Heat and glare protection
- Excellent UVA and UVB protection
- Lower room temperatures, reduce AC loads and save energy
- Daytime privacy
- Installed on the exterior but operated from the interior
- Motorized with wall switches, radio remotes or home automation
- In-rail fabric tension system
- 4 inch extruded aluminum housing for spans up to 9 feet wide
- 5 inch extruded aluminum housing for spans up to 18 feet wide
- 10 year warranty on our exterior fabric



Keep your beautiful views without losing the protection.

The Solution Xtreme

Xtreme Openings up to 26 feet

The Solution Xtreme offers the same benefits as the Solution Screen but is constructed to be installed on extremely large patio openings over 18 feet wide. The larger axle allows for Xtreme screens to be installed on openings up to 26 feet. The Solution Xtreme creates a retractable and protective outdoor living space anytime you need it throughout the year.

- Provides shade, privacy and extends your living space
- Entertain your guests with comfort and style
- Reduce wind chill and retain heat in the winter
- Optional bottom gasket provides additional insect protection
- Keep pets in and pests out
- Golf ball protection
- Multiple installation options for function and aesthetics
- Motorized with wall switches, radio remotes or home automation
- 7 inch extruded aluminum housing for spans up to 26 feet wide
- 10 year warranty on our exterior fabric



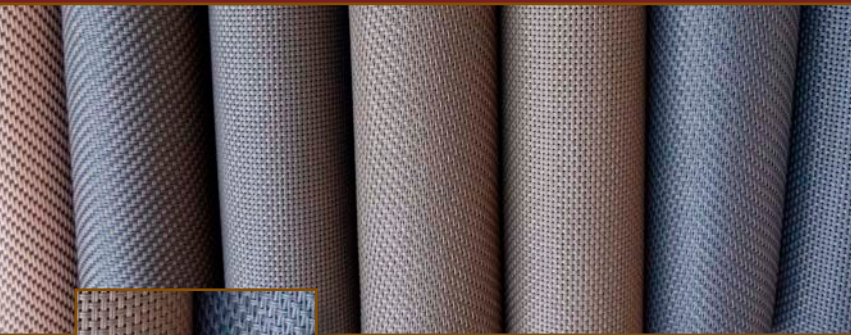
Transform your patio into an outdoor living area.

Quality Construction

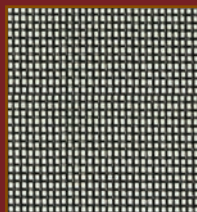
Our new in-rail tension system is ideal for windows, doors and patios

- The screen is secured on all four sides when lowered
- No more side light gaps
- Retracts up out of view when not in use
- In house powder coating allows for custom color match
- World renowned Mermet® fabrics

You can depend on our retractable screen systems to last for many years. We use a vinyl coated fiberglass screen material, coated and loomed in the USA by Mermet®. Our retractable screen systems come with a 10 year warranty against fading and will not rot or mildew.



Available in 12% or 5% openness factors.



The Tuff Insect Screen
A new fabric option for all Solution screens.
45% openness factor for near perfect visibility.



High strength zipper, weight tested to over 800 lbs.

Co-extrusion tension gasket secures the fabric in the guide rails

2-piece powder coated aluminum guide rails

2 options of openness factor and several colors available



4 inch extruded aluminum housing

From the outside, the aluminum housing used to contain the screens creates an attractive appearance.



7 inch extruded aluminum housing



5 inch extruded aluminum housing

Customer Testimonials

"We are really happy with our Solution Screen. We like the fact that we can sit out on our porch comfortably and not be blinded by the sun. The screen also helps to cut down on the breeze so that you can sit out there in December without being chilly. I'd also like to say that the installers were very professional. They care, they were very nice, they were competent and they knew what they were doing." - Foard

"The Solution Screens are outstanding! They look great! We have another big sliding glass door we are definitely going to do in the spring." - Mayfield

"We had Solution Screens installed because we had so much light coming through our west facing windows and it does a beautiful job of screening out the strong sunlight. They work wonderfully. We have always been happy with your follow up and your great service and will continue to use Tucson Rolling Shutters." - Britt

We manufacture quality.

Tucson Rolling Shutters, Inc. has been locally owned and operated since 1979. We manufacture and install the highest quality retractable products available. Call now to set up your free in home estimate or stop by one of our showrooms.

Showroom

7356 N. Oracle Road
Tucson, AZ 85704

520.297.2828

Corporate Office

500 E. 27th Street
Tucson, AZ 85713

tucsonrollingshutters.com

ROC# 102021, 102032

